

Second Annual

Ohio State Student Data Visualization

Challenge

An interdisciplinary collaborative competition matching data, student skill sets and team roles for socially responsibility

Final Results

For details:

www.visualizationhub.com

Application period: December 15, 2015-January 16, 2016

2015-16

Data

Sponsor



2015-16 Award

Sponsors



pwc

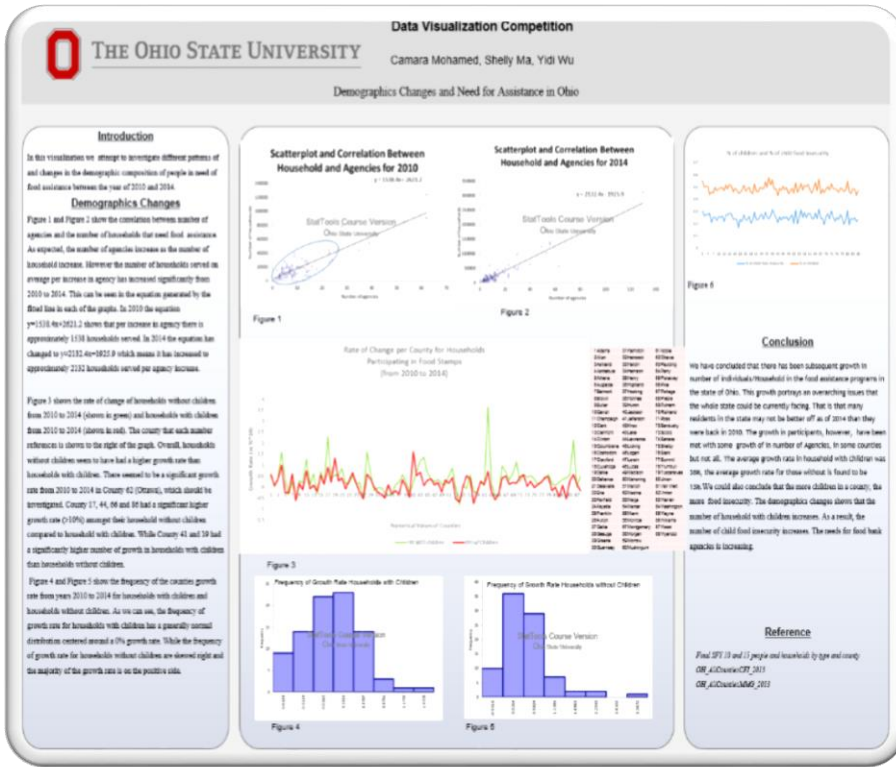


CardinalHealth



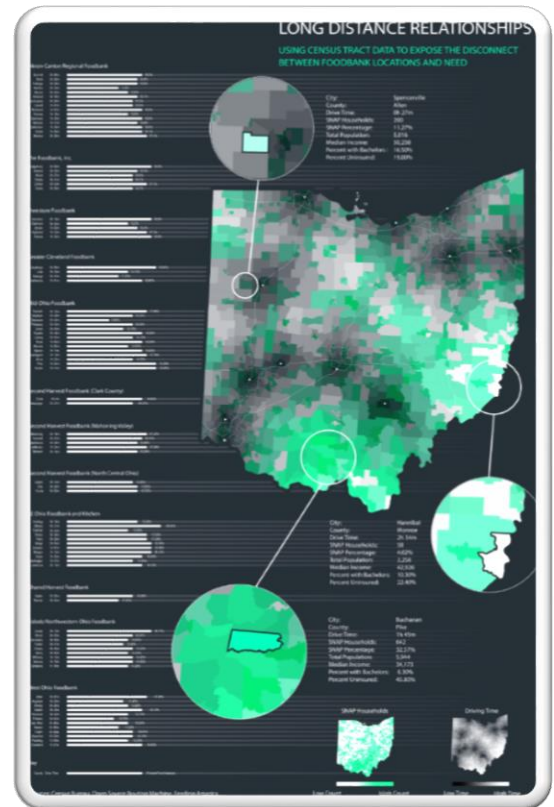
1st Place

Team: Mohamed Camara, Yidi Wu, Shelly Ma



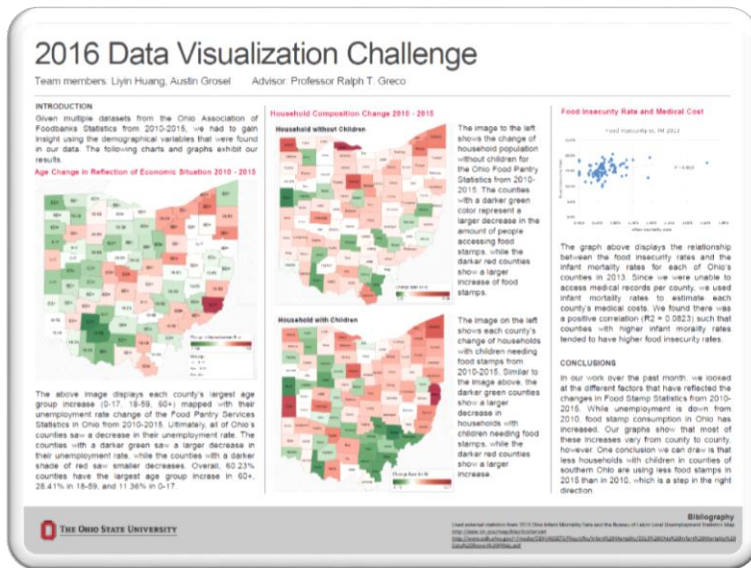
2nd Place

Team: Kyle Voytovich, Brett Bejcek, Justin Gurtz



3rd Place

Team: Liyin Huang, Austin Grosel



The table below provides a breakdown of scoring and the basis of final placement.

| | Scores from OSU Faculty Judges (w/ Data Vis Exp) | | | Scores from Industry Judges (w/ Data Vis Exp) | | |
|--------------|---|--------------|--------------|--|--------------|--------------|
| | 1st Place | 2nd Place | 3rd Place | 1st Place | 2nd Place | 3rd Place |
| Validity | 3.25 | 3.42 | 3.25 | 3.24 | 2.33 | 2.43 |
| Efficiency | 3.17 | 2.83 | 2.75 | 3.52 | 2.86 | 2.81 |
| Completeness | 2.83 | 2.17 | 2.83 | 3.76 | 2.52 | 3.05 |
| Novelty | 3.67 | 2.67 | 2.25 | 3.33 | 3.33 | 2.76 |
| Practicality | 2.33 | 3.25 | 2.58 | 3.00 | 2.19 | 2.52 |
| Total | 15.25 | 14.33 | 13.67 | 16.86 | 13.24 | 13.57 |

Well done all student participants!

Collectively you've represented the following majors...

You've shown how working together across disciplines can provide unique perspectives on reality that serve a public good.

Thanks once again to the faculty participating as judges as well as the industry representatives.

And a Special thanks to Ohio Association of Foodbanks for donating the data set, and PwC and Cardinal Health for their generous donation of prizes.

Operations Management, International Studies, Finance, Biomedical Science, Studio Arts, Architecture, Computer Science, Economics, Systems Engineering, French, Data Analytics, Logistics, Information Systems, Statistics, Entrepreneurship, Diplomacy, Accounting, Mathematics